



**AUGOE SHIPPING
/AVIATION**

COMPANY PROFILE





AUGOE SHIPPING

Presents High Speed Multi functional FireFighting Crafts

FLEX FIGHTER

QUEEN JAY





PENGUIN SHIPYARD ASIA PTE LTD

Purveyors of Quality High-Speed Aluminium Craft
A subsidiary of Penguin International Limited

10 Tuas Basin Link, Singapore 638794, Republic of Singapore

Tel: +65 6870 2709

Fax: +65 6862 1087

Email: psa@penguin.com.sg

Web: www.penguin.com.sg

FLEX FIGHTER MAX

Crew Boat • Security Boat • Anytime • Anywhere



HULL 425

VESSEL OVERVIEW

Vessel Type:	Aluminium Monohull Fast Multi-Role Security Vessel
Classification:	Designed and built by Penguin Shipyard
Safety Regulation:	Based on the Caterpillar C32-powered Flex-400C MAX
Regs, Codes, Guidelines:	BV / * HULL * MACH. Crew Boat, Sea Area 3 BV and Panama Flag State requirements MARPOL, SOLAS, IMDG

HULL PARTICULARS

Length Overall:	40.00 m
Breadth Moulded:	7.60 m
Depth Moulded:	3.65 m
Loaded Draft:	1.89 m
Bow Transfer Platform for Personnel:	Fitted

CARGO DECK

Clear Deck Area:	92 sqm
Deck Cargo Capacity:	60 MT
Deck Strength:	2.0 MT / sqm
Deck Dimensions:	16.5 m x 5.5 m
Cargo Railing Height:	1.0 m
Deck Crane:	Palfinger PK4501M, 510 kg @ 5.5 m outreach
Deck Store:	Fitted
Remarks:	Adequate cargo retainers and lashing lugs on both sides for securing deck cargo

TONNAGE

GRT:	Approx. 272 MT
NRT:	Approx. 51 MT
DWT:	Approx. 127 MT

MAIN MACHINERY

Number of Main Engines:	3 units with resilient mountings
Make / Type:	Caterpillar C32 ACERT IMO Tier-2
Total BHP:	3 x 1450 BHP @ 2300 rpm
Propellers:	3 x fixed pitch, Ni-AI-Brnz, 5 blades
Bow Thruster:	1 unit electro-hydraulic @ 100 HP

PERFORMANCE

Maximum Speed:	28 knots @ 100% MCR
Maximum Fuel Consumption:	878 L / hr
Economical Speed:	26 knots @ 65% MCR
Economical Fuel Consumption:	705 L / hr

GENERATORS AND AUXILIARY ENGINES

Generators:	3 x Caterpillar SR4 Alternator 66 kW
Prime Movers:	3 x 125 BHP @ 1500 rpm
Make / Type:	Caterpillar C4.4
Vessel Power Supply:	415/220 Volt AC, 50 Hz, 3-phase + 24 Volt DC
Shore Power / Reelers Sockets:	1 / 4

SAFETY EQUIPMENT

Life Rafts:	3 x 25-man each side as per SOLAS
Life Jackets:	94 on board as per SOLAS
Life Buoys:	5 on board as per SOLAS
Scrambling Nets:	2 units
Other Equipment:	Pyrotechnics, line-throwing apparatus
Rescue Zone:	Port and Starboard

STANDARD FLEX FIGHTER FEATURES

- All-Round Wheelhouse Ballistic Protection:
 - Wheelhouse Windows (STANAG L1 or equivalent)
 - Full Wheelhouse Cladding (STANAG L1 or equivalent)
- Gun Mounts with Ballistic Shields* (1 x forward and 1 x aft)
- Concealed Deck Command Centre/Safe Room
- * Weapons not included

ACCOMMODATION AND STORAGE

Passenger Seats:	54 pax
Passenger Toilets:	2 cubicles with showers
Passenger Lounge with Ammonities:	Fitted
Passenger Entertainment System:	1 x LCD TV screen
Security Personnel Cabins / Total Bunks:	3 / 12 (3 x 4-man)
Security Personnel Shower Rooms:	2 cubicles
Concealed Utility Room with Arms Locker:	Fitted
Concealed Deck Command Centre/Safe Room:	Fitted
- Radar Monitor, CCTV Monitor, VHF, Heading Repeater, GPS Repeater	
- Escape Hatch to Bow Thruster Compartment	

BELOW MAIN DECK

Crew Cabins / Total Bunks:	4 / 6 (2 x 1-man, 1 x 2-man, 1 x 4-man)
Crew Toilet:	1 cubicle with shower
Entertainment System:	1 x LCD TV screen
Crew Mess and Galley:	Fitted
Crew Washer and Dryer:	Fitted
Separate Walk-in Freezer and Chiller:	Fitted
Dry Store:	Fitted
Work Bench:	Fitted

ELECTRONICS AND CONTROLS

GMDSS:	Sea Area A1+A2
VHF:	Funco FM-8900E
MF/HF Radio:	Funco FS-1575
BNWAS:	LeGuardian2025
Marine Radar:	Funco or equivalent
GPS:	Funco GP-35
Depth / Echo Sounder:	Funco 020-SPSD
Gyro Compass:	Simrad RGC50
Magnetic Compass:	Riviera 6"
Navtex Receiver:	JRC NT1600
Public Address / Intercom System:	Phonitex CIS 3130
Search Lights:	3 x 1000W
EPIRB:	McMurdo E6
SART:	McMurdo S5A
AIS:	Funco FA-170
Indian Census Terminal:	Thales VF350VM
Night Vision Camera:	FLIR M364
CCTV:	10 units fitted (5 x Exterior, 1 x Bridge, 1 x Passenger Area, 1 x Mess Room, 2 x Engine Room)

TANK CAPACITIES

Fuel Oil:	82,000 L
Fresh Water:	30,000 L
Oil Bilge:	600 L
Lube Oil:	400 L
Gear Oil:	400 L
Hydraulic Oil:	400 L
Fuel Oil Sludge:	500 L
Fuel Oil Purifier:	Heavy duty, self-cleaning unit
IMO-Approved Sewage Treatment Plant:	Fitted for 15 pax
IMO-Approved Oil Water Separator:	Fitted for 15 ppm
Water maker:	3.4 MT / day

ELECTRONIC FUEL MANAGEMENT SYSTEM

FUELTRAX electronic fuel management system:	
- Controls meters for main engines and generators	12 units
- Controls meter for bunker line	1 unit

EMERGENCY RESPONSE FEATURES

- 1 x external FIFL monitor with remote clutch and controls @ 600 cbm per hour
- Aerosol fire extinguishing system
- Motorsised workboat with diesel outboard motor



AUGOE SHIPPING
High Speed Multi-functional FireFighting Crafts
FLEX FIGHTER

BIG JOSH



 **AUGOE & SONS**
COMPANY NIC. LIMITED
... Bridging the gap for Excellence





PENGUIN

PENGUIN SHIPYARD ASIA PTE LTD

Purveyors of Quality High-Speed Aluminium Craft
A subsidiary of Penguin International Limited

18 Tean Boon Link, Singapore 636794, Republic of Singapore

Tel: +65 6870 2709

Fax: +65 6862 1887

Email: psa@penguin.com.sg

Web: www.penguin.com.sg

FLEX FIGHTER MAX

Crew Boat • Security Boat • Anytime • Anywhere



HULL 473

VESSEL OVERVIEW

Vessel Type:	Aluminium Monohull Fast Multi-Role Security Vessel
Classification:	Designed and built by Penguin Shipyard
Safety Regulation:	Based on the Caterpillar C32-powered Flex-40SC MAX
Reg. Codes, Guidelines:	BV / * HULL * MACH. Crew Boat, Sea Area 3 BV and Panama Flag State requirements MARPOL, SOLAS, IMDG

HULL PARTICULARS

Length Overall:	40.00 m
Breadth Moulded:	7.50 m
Depth Moulded:	3.65 m
Loaded Draft:	1.69 m
Bow Transfer Platform for Personnel:	Fitted

CARGO DECK

Clear Deck Area:	92 sqm
Deck Cargo Capacity:	60 MT
Deck Strength:	2.0 MT / sqm
Deck Dimensions:	16.5 m x 5.5 m
Cargo Railing Height:	1.0 m
Deck Crane:	Palfinger PK4501M, 500 kg @ 5.5 m outreach
Deck Store:	Fitted
Remarks:	Adequate cargo retainers and lashing lugs on both sides for securing deck cargo

TONNAGE

GRT:	Approx. 272 MT
NRT:	Approx. 61 MT
DWT:	Approx. 127 MT

MAIN MACHINERY

Number of Main Engines:	3 units with resilient mountings
Make / Type:	Caterpillar C32 ACERT IMO Tier-2
Total BHP:	3 x 1450 BHP @ 2300 rpm
Propeller:	3 x fixed pitch, Ni-AI-Bronze, 5 blades
Bow Thruster:	1 unit, electro-hydraulic @ 100 HP

PERFORMANCE

Maximum Speed:	28 knots @ 100% MCR
Maximum Fuel Consumption:	678 L / hr
Economical Speed:	26 knots @ 65% MCR
Economical Fuel Consumption:	765 L / hr

GENERATORS AND AUXILIARY ENGINES

Generators:	3 x Caterpillar SRA Alternator 66 kW
Prime Movers:	3 x 125 BHP @ 1500 rpm
Make / Type:	Caterpillar C4.4
Vessel Power Supply:	415/220 Volt AC, 50 Hz, 3-phase + 24 Volt DC
Shore Power / Reeler Sockets:	1 / 4

SAFETY EQUIPMENT

Life Rafts:	3 x 25-man each side as per SOLAS
Life Jackets:	64 on board as per SOLAS
Life Buoys:	6 on board as per SOLAS
Scrambling Nets:	2 units
Other Equipment:	Pyrotechnics, line-throwing apparatus
Rescue Zone:	Port and Starboard

STANDARD FLEX FIGHTER FEATURES

- All-Round Wheelhouse Ballistic Protection:
 - Wheelhouse Windows (STANAG L1 or equivalent)
 - Full Wheelhouse Cladding (STANAG L1 or equivalent)
- Gun Mounts with Ballistic Shields* (1 x forward and 1 x aft)
- Concealed Deck Command Centre/Safe Room
- * Weapons not included

ACCOMMODATION AND STORAGE

MAIN DECK

Passenger Seats:	54 pax
Passenger Toilets:	2 cubicles with showers
Passenger Lounge with Amenities:	Fitted
Passenger Entertainment System:	1 x LCD TV screen
Security Personnel Cabins / Total Bunks:	3 / 12 (3 x 4-man)
Security Personnel Shower Rooms:	2 cubicles
Concealed Utility Room with Arms Locker:	Fitted
Concealed Deck Command Centre/Safe Room:	Fitted
- Radar Monitor, CCTV Monitor, VHF, Heading Repeater, GPS Repeater,	
- Escape Hatch to Bow Thruster Compartment	

BELOW MAIN DECK

Crew Cabins / Total Bunks:	4 / 6 (2 x 1-man, 1 x 2-man, 1 x 4-man)
Crew Toilet:	1 cubicle with shower
Entertainment System:	1 x LCD TV screen
Crew Mess and Galley:	Fitted
Crew Washer and Dryer:	Fitted
Separate Walk-in Freezer and Chiller:	Fitted
Dry Store:	Fitted
Work Bench:	Fitted

ELECTRONICS AND CONTROLS

GMDSS:	Sea Area A1+A2
VHF:	Furuno FM-8900E
MFRHF Radio:	Furuno FS1575
BHWAS:	LeGuardian2025
Marine Radar:	Furuno or equivalent
GPS:	Furuno GP-35
Depth / Echo Sounder:	Furuno 520-5P3D
Gyro Compass:	Simrad RGC50
Magnetic Compass:	Riviera 6"
Narxex Receiver:	JMC NT1600
Public Address / Intercom System:	Phonotek CIS 3130
Search Lights:	3 x 1000W
EPIRB:	McMurdo E6
SART:	McMurdo S5A
AIS:	Furuno FA-170
Indium Certus Terminal:	Thales VF300VM
Night Vision Camera:	FLIR M364
CCTV:	10 units fitted (5 x Exterior, 1 x Bridge, 1 x Passenger Area, 1 x Mess Room, 2 x Engine Room)

TANK CAPACITIES

Fuel Oil:	62,000 L
Fresh Water:	30,000 L
City Barge:	600 L
Lube Oil:	450 L
Gear Oil:	450 L
Hydraulic Oil:	450 L
Fuel Oil Sludge:	500 L
Fuel Oil Purifier:	Heavy duty, self-cleaning unit
IMO-Approved Sewage Treatment Plant:	Fitted for 10 pax
IMO-Approved Oil Water Separator:	Fitted for 10 ppm
Water maker:	3.4 MT / day

ELECTRONIC FUEL MANAGEMENT SYSTEM

FUELTRAX electronic fuel management system:	
- Controls meters for main engines and generators:	12 units
- Controls meter for bunker line:	1 unit

EMERGENCY RESPONSE FEATURES

- 1 x external FIFU monitor with remote clutch and controls @ 600 cfm per hour
- Aerosol fire extinguishing system
- Motorsised workboat with diesel outboard motor

The details on this specification sheet are produced in good faith but not guaranteed.

© Penguin International Limited. All rights reserved.



 **AUGOE & SONS**
COMPANY NIG. LIMITED
... Bridging the gap for Excellence





PENGUIN SHIPYARD ASIA PTE LTD

Purveyors of Quality High-Speed Aluminium Craft
A subsidiary of Penguin International Limited

21 Tuas Road, Singapore 638489, Republic of Singapore.
Tel: +65 6870 2709
Fax: +65 6862 1087
Email: psa@penguin.com.sg
Web: www.penguin.com.sg



Engineered for Speed and Security

VESSEL OVERVIEW

Vessel Type: Aluminium Monohull Fast Multi-Role Security Vessel
Designed and built by Penguin Shipyard
Based on the Caterpillar C32-powered Flex-40SC MAX
Classification: BV I * HULL • MACH, Crew Boat, Sea Area 3
Safety Regulation: BV and Panama Flag State requirements
Regs, Codes, Guidelines: MARPOL, SOLAS, IMDG

HULL PARTICULARS

Length Overall: 40.00 m
Breadth Moulded: 7.60 m
Depth Moulded: 3.65 m
Loaded Draft: 1.89 m
Bow Transfer Platform for Personnel: Fitted

CARGO DECK

Clear Deck Area: 92 sqm
Deck Cargo Capacity: 60 MT
Deck Strength: 2.0 MT / sqm
Deck Dimensions: 16.9 m x 5.5 m
Cargo Railing Height: 1.0 m
Deck Crane: Palfinger PK4501M, 500 kg @ 5.5 m outreach
Deck Store: Fitted
Remarks: Adequate cargo retainers and lashing lugs on both sides for securing deck cargo

TONNAGE

GRT: 272 MT
NRT: 81 MT
DWT: 136 MT

MAIN MACHINERY

Number of Main Engines: 3 units with resilient mountings
Make / Type: Caterpillar C32 ACERT IMO Tier II
Total BHP: 3 x 1450 BHP @ 2300 rpm
Propellers: 3 x fixed pitch, Ni-Al-Bronze, 5 blades
Bow Thruster: 1 unit electro-hydraulic @ 100 HP

PERFORMANCE

Maximum Speed: 28 knots @ 100% MCR
Maximum Fuel Consumption: 878 L / hr
Economical Speed: 26 knots @ 85% MCR
Economical Fuel Consumption: 765 L / hr

GENERATORS AND AUXILIARY ENGINES

Generators: 3 x Caterpillar SR4 Alternator 86 kW
Prime Movers: 3 x 125 BHP @ 1500 rpm
Make / Type: Caterpillar C4.4
Vessel Power Supply: 415/220 Volt AC, 50 Hz, 3-phase + 24 Volt DC
Shore Power / Reefer Sockets: 1 / 4

SAFETY EQUIPMENT

Life Rafts: 3 x 25-man each side as per SOLAS
Life Jackets: 84 on board as per SOLAS
Life Buoys: 8 on board as per SOLAS
Scrambling Nets: 2 units
Other Equipment: Pyrotechnics, line-throwing apparatus
Rescue Zone: Port and Starboard

STANDARD FLEX FIGHTER FEATURES

All-Round Wheelhouse Ballistic Protection:
- Wheelhouse Windows (STANAG L1 or equivalent)
- Full Wheelhouse Cladding (STANAG L1 or equivalent)
Gun Mounts with Ballistic Shields* (1 x forward and 1 x aft)
Concealed Deck Command Centre/Safe Room
* Weapons not included

ACCOMMODATION AND STORAGE

MAIN DECK

Passenger Seats: 54 pax
Passenger Toilets: 2 cubicles with showers
Passenger Lounge with Amenities: Fitted
Passenger Entertainment System: 1 x LCD TV screen
Security Personnel Cabins / Total Bunks: 3 / 12 (3 x 4-man)
Security Personnel Shower Rooms: 2 cubicles
Concealed Utility Room with Arms Locker: Fitted
Concealed Deck Command Centre/Safe Room: Fitted
- Radar Monitor, CCTV Monitor, VHF, Heading Repeater, GPS Repeater.
- Escape Hatch to Bow Thruster Compartment

BELOW MAIN DECK

Crew Cabins / Total Bunks: 4 / 8 (2 x 1-man, 1 x 2-man, 1 x 4-man)
Crew Toilet: 1 cubicle with shower
Entertainment System: 1 x LCD TV screen
Crew Mess and Galley: Fitted
Crew Washer and Dryer: Fitted
Separate Walk-In Freezer and Chiller: Fitted
Dry Store: Fitted
Work Bench: Fitted

ELECTRONICS AND CONTROLS

GMDSS: Sea Area A1+A2
VHF: Sailor 6222
MF/HF Radio: Sailor 6310
BNWAS: LeGuardian2025
Marine Radar: HALO-3
GPS: Simrad P2005
Depth / Echo Sounder: SonarHub
Satellite Compass: Simrad P3007
Magnetic Compass: Riviera 6"
Navtex Receiver: JMC NT1800
Public Address / Intercom System: Phontech CIS 3130
Search Lights: 3 x 1000W
EPIRB: McMurdo E8
SART: McMurdo S5A
AIS: Simrad V5035
Iridium Certus Terminal: Thales VF350VM
Night Vision Camera: FLIR M364
CCTV: 10 units fitted
(5 x Exterior, 1 x Bridge, 1 x Passenger Area, 1 x Mess Room, 2 x Engine Room)

TANK CAPACITIES

Fuel Oil: 82,000 L
Fresh Water: 30,000 L
Oily Bilge: 600 L
Lube Oil: 450 L
Gear Oil: 450 L
Hydraulic Oil: 450 L
Fuel Oil Sludge: 500 L
Fuel Oil Purifier: Heavy duty, self-cleaning unit
IMO-Approved Sewage Treatment Plant: Fitted for 15 pax
IMO-Approved Oily Water Separator: Fitted for 15 ppm
Water maker: 3.4 MT / day

ELECTRONIC FUEL MANAGEMENT SYSTEM

Electronic Fuel Management System: Fitted

EMERGENCY RESPONSE FEATURES

1 x external FiFi monitor with remote clutch and controls @ 600 cbm per hour
Aerosol fire extinguishing system
Motorised workboat with diesel outboard motor

HEALTH, SAFETY & ENVIRONMENT

AUGOE & SONS COMPANY LTD. operates an internal quality and safety system in accordance with the latest requirements as stipulated in ISO 9001-2000 series on quality management and ISO 14000: 1996 on environment management systems.

Ahead of the official issues of ISO 9001:2000 series in Dec-2000, AUGOE & SONS COMPANY LTD. started a transition programme of the quality management system towards the new standard of integration. This has direct effect of the system since the standard is based on the eight quality management principle:

- Customer: Focused organization, Organizations depends on their customers and therefore, should understand current future customer needs, meet customer requirements and strive to exceed customer expectations.
- Leadership: Leaders establish unity of purpose and direction of the organization, They should create and maintain the internal environment in which people can become fully involved in achieving the organization's objectives.
- Involvement of people: People at all levels are the essence of an organization, and their full involvement to enable their abilities to be used for the organization's benefit.
- Process Approach: A desired result is achieve more effectively when related resources and activities are managed and processed.
- System Approach to Management: Identifying, understanding, and managing a system of interrelated processes for a given improvement of the organization's effectiveness and efficiency.
- Continual improvement: Continual improvement should be permanent objective of the organization.
- Factual approach to decision-making: Effective decisions are based on the analysis of data and information.
- Mutually Beneficial Supplier Relationship: An organization and it's supplier are interdependent, and a mutually beneficial relationship enhances the ability of both to create value.
- A Documented QUALITY ASSURANCE and HEALTH, SAFETY AND ENVIRONMENT: Four level modeled policy system statement has been adopted as the guidance for success in Augoe and Sons Company Ltd.





Who we are

AUGOE & SONS Company Nigeria Ltd is a leading provider of world- class integrated solutions to the oil, gas and energy industry in the areas of; Process and Pipeline Services, Aviation, Marine Fire Fighting and Security Services, Electrical and Instrumentation, Mechanical Engineering, Civil Engineering and Environmental Services, Logistic and Procurement, Project Management Worldwide. Our professional synergy operating from strategic key energy hubs offers an enhanced range of innovative multi-disciplinary services.

Acting as a single source provider and supported by strategic local and foreign partners to bring the latest and best technologies to our customers. We have a responsibility to ensure that our customers are benefitting from the most appropriate tools and technologies available in the market to ensure a job “well-done”.

Our business model supports your project objectives, timelines and budgets, adding value through experience, expertise and relationships.

AUGOE & Sons Company Nigeria Ltd believes that there is a market requirement for a specialist service provider that will listen, concentrate and focus on the needs of its clients while performing accordingly. It is the duty of the service provider to mitigate the client's risk and exposure wherever possible. We continue to deliver safe, reliable & the highest quality service through the provision of competent personnel in all field of services, state of the art well-maintained equipment with necessary technical Support.

The aim is to be the preferred partner for the provision of process and Pipeline Services, Marine Fire Fighting and Security Services, Electrical and Instrumentation, Mechanical and Civil Engineering, Environmental Services, Logistics and Procurement, Project Management intervention services worldwide. To achieve this, the core ethos of delivering the quality service for which AUGOE & Son Nigeria Ltd is renowned will be integrated with the global reach of AUGOE & Sons Nigeria Ltd is renowned will be integrated with the global reach of AUGOE & Sons Nigeria Ltd solutions whilst continuing to put the needs of customers at the heart of the business.

We operate a comprehensive service base here in Nigeria, our services are provided across the industries with corporate Headquarter in Port Harcourt.

Policy STATEMENT



Quality & Safety (HSE) Policy

AUGOE & Sons Nigeria Ltd is dedicated to a quality and safety (HSE) policy, ensuring that its services are of a unified and of a consistent level, meeting the agreed requirements of its customers', national (Nigerian) and international industry codes and standard.

The Company believes in the concept of total quality, safety, protection of the environment, and satisfaction of customers, suppliers, employees, and general public working together to pursue the policy, and the continual process of quality and safety (HSE) improvement.

The objective of the Quality and Safety Management System is to aim to achieve total Customers Satisfaction by insuring quality assurance and meeting (HSE) requirements.

The company is dedicated to observe full compliance of (HSE) local and global best practices and poised to continually implement same.

Quality and safety management system is a permanent feature of the life of the Company, with all personnel fully aware of their obligation and requirement binding our quality and safety documentation system, throughout our service as of different strata.

AUGOE & Sons Nigeria Ltd is operating under this top level "Policy and Authority Statement and has derived policy, undersigned and sealed by top management for all sub-classified aspects of the quality, safety (HSE) and community assistance.



AUGOE SHIPPING

Augoe Shipping, a department of Augoe and Son's Company Nigeria Limited is saddled with the responsibility of setting a range of innovative world class integrated marine services solution to the oil and gas sector in Nigeria. Augoe Shipping believes that there is a market requirement for specialist service provider to concentrate and focus on mitigating client risk and exposure wherever possible. Augoe Shipping is poised to delivering safe, reliable and highest quality services through the provision of competent personnel equipped with experience. Augoe Shipping in view to checkmate the high inflammable and risky nature of oil and gas sector in marine launches its fleet of sea fire fighting, rescue, mass evacuation, medivac and ballistic fire fighting security vessel that can collectively handle chemical, biological and radioactive incidence, executes mass evacuation and fights inferno at deep sea, offshore facilities and in shallow draft in the Nigerian water ways. These fleets are:

- Lord Jeffrey
- Queen Jay
- Big Josh
- Lady Oge
- Red Firefish
- Bluewhale

These vessels unique features, our experienced team of marine staff on board and the synergy with Nigerian armed security service agent enhances the ability of Augoe Shipping to unitarily provide professional fire fighting and security services collectively providing absolute safety and fire check in offshore, sea and low draft waters for the smooth and uninterrupted operations of the vibrant international oil company (I.O.C's) and NNPC with its subsidiaries.



INTRODUCING AUGOE FIRE FIGHTERS



Our Fleet:

- Lord Jeffrey
- Queen Jay
- Big Josh
- Lady Oge
- Red Firefish
- Bluewhale



Multi-Role:

- External Fire Fighting
- Standby Rescue & Medivac
- Armed Security & Escort
- Offshore Personnel & Cargo Transfer Boats
- Shallow draft Fire Fighting, Personnel & Cargo Escort.

Lord Jeffery



Multi-Role:

- External Fire Fighting
- Standby & Medivac
- Armed Security & Escort
- Offshore Personnel & Cargo Transfer Boats
- Shallow draft Fire Fighting, Personnel & Cargo Escort

Augoe Lord Jeffery - Designed and built by Penguin, Proven multi-role security boat with offensive and defensive abilities. She functions perfectly on offshore marine services in crew change, cargo transportation, firefighting, search-and-rescue, medivac, standby. She has an All-round wheelhouse ballistic protection (STANAG L1), gun mounts with ballistic shields (1 fwd, 2 aft), Deck command centre, safe haven and arms locker. Her engine operates in Electronic Fuel Management System, She also have a seating capacity of 50 passengers which is perfect for crew change activities.

She is installed with night vision camera, 10 CCTV cameras with 3 months storage capacity and cabins for 12 navy personnel Heavy-duty, self-cleaning fuel oil purifier. Lord Jeffery Fire Fighting system is remotely controlled externally by Fire Fighting monitor @ 600 cbm/hr, she has a knuckle-boom deck crane, 93 sqm cargo deck, 86,000l fuel capacity and 30,000l fresh water capacity plus 3.4 MT/day water maker. Also a Walk-in freezer and chiller (3 cbmeach).

Economical/maximum speed: 26/28 knots.



Shallow Draft:

- Fire Fighter
- Armed Security & Escort
- Personnel & Cargo Escort
- Rescue and Search
- Low Draft Vessel

Augoe Lady Jess RJ rescue jet is a rescue vessel designed specifically to function in shallow water operations. Lady Jesse RJ conducts swift water firefighting, security escort and rescue to casualties in shallow water without fear of grounding due to its shallow draft and toning sled.

Red Fire Fish



- 12 monitor, 3 out of 12 monitors launches foam & water
- 240,000 ltr/min
- 360° Fire Fighting Coverage
- 200m water spraying distance
- Dynamic position system



3 out of 12 monitors are able to launch water and foam



Water can be sprayed as far as 200m



The Augoe Red Fire Fish is a fire fighting vessel designed and built by Penguin Shipping and Asia PTE LTD. She can Project 240,000 Litres of water and foam per minutes. Her superstructure is pressurized, for protection against chemical, biological radiological threats. She has decontamination showers and an infirmary, for rescuing infected individuals. She has a stern launching ramp to a rescue boat. She is also equipped with a unique navigational aid - an autopilot design to keep the vessel on station, when the thrust from her water cannons is pushing off position. Her maximum speed is 20 knots

Blue Whale



- Carries up to 300 passengers
- It has a decontamination chamber
- It is equipped with medical treatment room
- It has heli-winch pad
- 12 decontamination shower cubicles



This Heavy Rescue Vessel can carry up to 300 passengers



Critically injured casualties can be airlifted to hospital from a heli-winch pad



and a decontamination room fitted with 3 shower cubicles



The 2020 model Augoe Blue Whale also built by Penguin shipyard Asia PTE LTD. Is a catamaran, she is designed to accommodate 300 rescues and she can project 45,000 litres of water and foam per minute. She has 12 decontamination showers, also has a large boardroom which can help to coordinate multiple emergency vessels in major fire circumstances it also has a helicopter landing pad, with a winch for landings in high sea states. Her maximum speed is 35 knots.

Red Dolphin



- It has a decontamination chamber
- It is equipped with medical treatment room
- It has heli-winch pad
- 3 decontamination shower cubicles



The Augoe Red Dolphin also built in 2020 can project 88,300 litres of water and foam in one minute she has decontamination showers, and an infirmary.



She too has a superstructure offering CBR protection and her maximum speed is 30 knots.





AUGOE SHIPPING

AUGOE & SONS COMPANY NIG. LTD.
No. 2, Oghofo Close Off Orungbun Crescent
G.R.A. Phase 8 Port Harcourt
Tel: 0803312170, 08037087284
Email: info@augoe.com

RED DOLPHIN

GENERAL INFORMATION

Vessel Type: Intermediate-Rescue Vessel (IRV) - 2000HP Diesel Engine
Built: 2010 by HULL & BACH, Coastal Service Vessel Marine vessel
2000HP/17 HZ, Coastal Craft, Fire Fighting, Salvage
Power Supply: Diesel Engine, 2000HP/17 HZ
Flag: Nigeria
Reg. Code: 2000HP/17 HZ

MAJOR PARTICULARS

Length Overall: 20.0 m
Beam Overall: 6.0 m
Depth Overall: 4.0 m
Loaded Draft: 1.75 m

TOWAGE

Net: 170 MT
GRT: 170 MT
Max Displacement: 170 MT

MAIN SPECIFICATIONS

Number of Main Engines: 2 x 2000HP/17 HZ
Make / Type: MTU 12V 4000 M50
Total HP: 2 x 2000HP/17 HZ
Propulsion: 2 x Main Engines / 2 x Propellers

PERFORMANCE

Maximum Speed: 30 knots @ 1700 HP
Maximum Fuel Consumption: Approx. 1,500 L/Hr
Cruising Speed: 30 knots @ 1700 HP
Economic Fuel Consumption: Approx. 1,500 L/Hr

GENERATORS AND AUXILIARY ENGINE

Generators: 2 x Caterpillar 3516B/17 HZ
Prime Mover: 2 x 2000HP/17 HZ
Make / Type: Caterpillar CT 1
Fuel Power Supply: 2000HP/17 HZ, 3-phase + 34 VAC DC
Diesel Power / Fuel System: 1 x 1

SAFETY EQUIPMENT

Life Rafts: 4 x 10-man each with 200 LBS
Life Buoy: 1 x 10-man each with 200 LBS
Life Raft: 4 x 10-man each with 200 LBS
Survival Kit: 4 x 10-man each with 200 LBS
Other Equipment: Pyrotechnics, Fire-fighting equipment, Port and Starboard
Rescue Zone

WATER TREATMENT AND WASTE DISPOSAL

Waste Water: 2 x 1,000 LBS per hour
Waste Water: 2 x 1,000 LBS per hour
Waste Water: 2 x 1,000 LBS per hour
Waste Water: 2 x 1,000 LBS per hour
Waste Water: 2 x 1,000 LBS per hour

MARINE RESCUE VESSEL



ACCOMMODATION AND STOWAGE

Accommodation: 2000HP/17 HZ
Stowage: 2000HP/17 HZ
Stowage: 2000HP/17 HZ
Stowage: 2000HP/17 HZ
Stowage: 2000HP/17 HZ
Stowage: 2000HP/17 HZ
Stowage: 2000HP/17 HZ
Stowage: 2000HP/17 HZ
Stowage: 2000HP/17 HZ
Stowage: 2000HP/17 HZ

ELECTRONICS AND CONTROLS

GPS: 2000HP/17 HZ
VHF: 2000HP/17 HZ
VHF: 2000HP/17 HZ
VHF: 2000HP/17 HZ
VHF: 2000HP/17 HZ
VHF: 2000HP/17 HZ
VHF: 2000HP/17 HZ
VHF: 2000HP/17 HZ
VHF: 2000HP/17 HZ
VHF: 2000HP/17 HZ

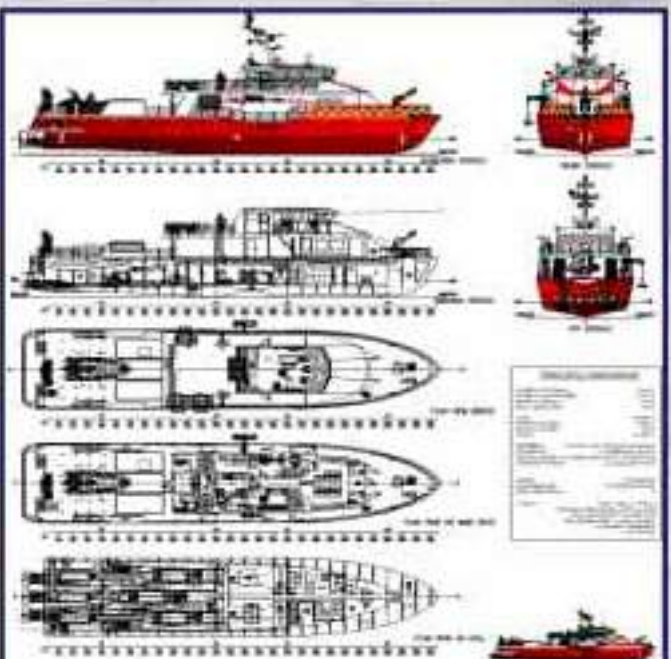
WATER TREATMENT

Water Treatment: 2000HP/17 HZ
Water Treatment: 2000HP/17 HZ
Water Treatment: 2000HP/17 HZ
Water Treatment: 2000HP/17 HZ
Water Treatment: 2000HP/17 HZ
Water Treatment: 2000HP/17 HZ
Water Treatment: 2000HP/17 HZ
Water Treatment: 2000HP/17 HZ
Water Treatment: 2000HP/17 HZ
Water Treatment: 2000HP/17 HZ

WATER TREATMENT

Water Treatment: 2000HP/17 HZ
Water Treatment: 2000HP/17 HZ
Water Treatment: 2000HP/17 HZ
Water Treatment: 2000HP/17 HZ
Water Treatment: 2000HP/17 HZ
Water Treatment: 2000HP/17 HZ
Water Treatment: 2000HP/17 HZ
Water Treatment: 2000HP/17 HZ
Water Treatment: 2000HP/17 HZ
Water Treatment: 2000HP/17 HZ

MARINE RESCUE VESSEL RED DOLPHIN





Multi-Role:

- Standby & medivac
- External fire fighting
- Armed security & escort
- Offshore personnel & cargo transfer





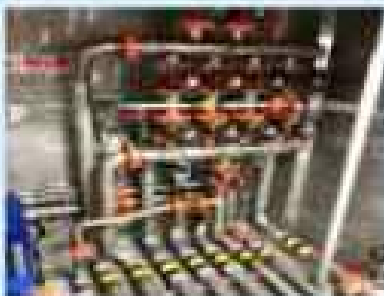
Industry-Leading Endurance:
36000 litres fuel capacity



Design

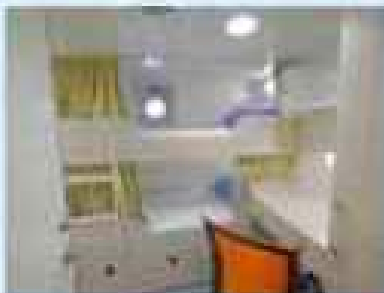


Wheel house



Fitted with engine/EFMS

Spacious engine room



Crew cabin

Crew mess

Shower room



Concealed safe haven



Multiple fire pump



93 sqm cargo deck



Gun mount



AUGOE /AVIATION

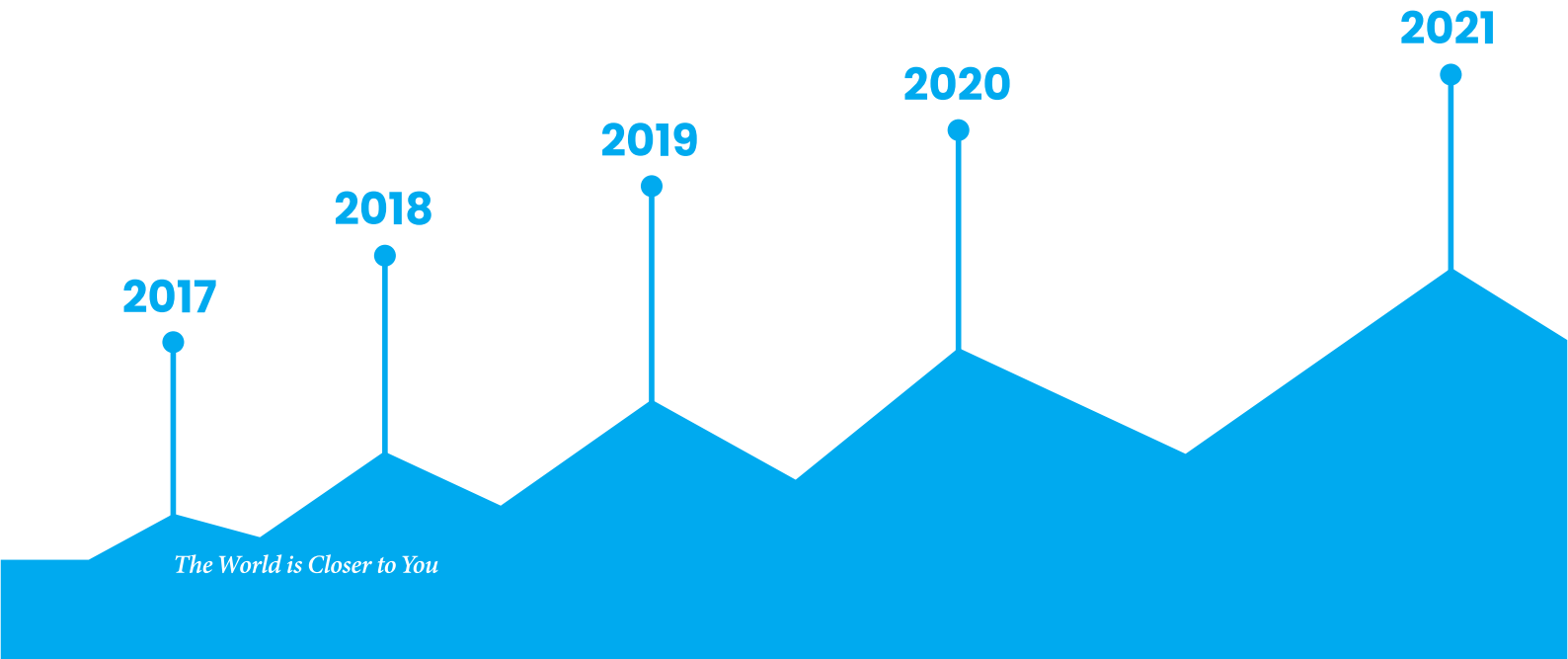




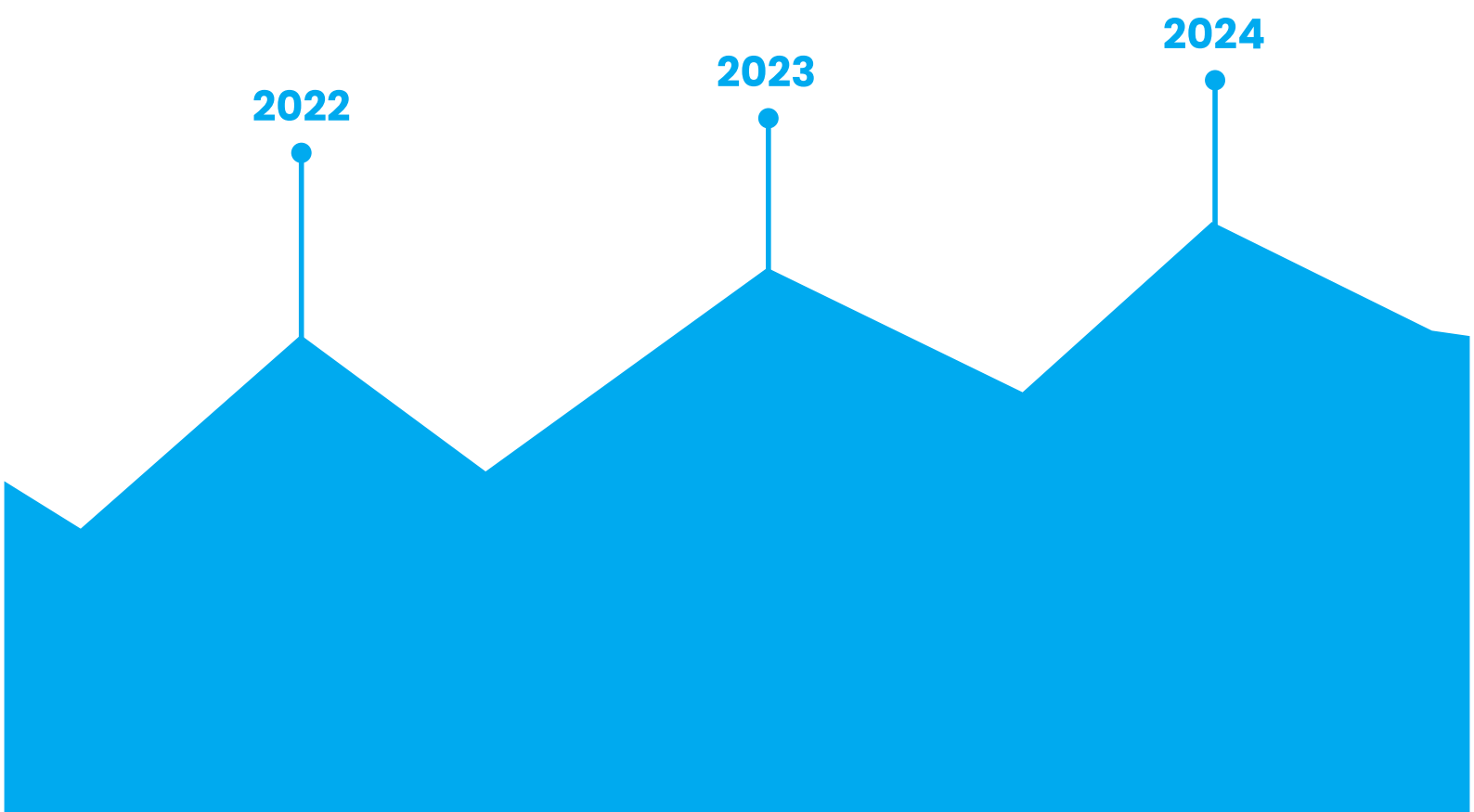
AUGOE/AVIATION

ABOUT US

AUGOE AVIATION has consistently set the standard for luxury private travel in Nigeria since its inception in 2017. Known for excellence, we have served over 500 clients globally with services including group charters, private charters, helicopter charters, and concierge.



We are committed to bringing you closer to your destination, your dreams, and the people who matter most. With **AUGOE SHIPPING/AVIATION**, the world is closer to you.



Our Mission



Everyone at **AUGOE & Sons Nigeria Ltd** is committed to provide the highest quality services with complete customer's satisfaction.

To provide "Engineered" solution that is professionally designed to optimize safety and environmental compliance
To provide cost effective strategies to solve the environmental challenges facing Oil and Gas Industry
To achieve a higher-level of productivity for all stakeholder in our business operations.

Our Vision



To be premier maritime services provider and offshore construction company focused on all upstream activities of the oil and gas sector. We seek to produce healthy financial rewards to investors as we provide growth opportunities and enrichment of our employees, business partners and communities we operate while striving for honesty, fairness and integrity.

CORE VALUES

Safety First: Ensuring the safety and security of our passengers and crew is our top priority.

Exceptional Service: We strive to exceed our clients' expectations in every aspect of our service.

Integrity: Conducting our business with honesty and ethical practices is fundamental to our operations.

Innovation: Continuously seeking advancements in technology and service to enhance our clients' travel experience.

Sustainability: Committing to environmentally responsible practices in our operations.



SERVICES



Private Jet Charter:

Providing on-demand private jet services for business and leisure travel.



Corporate Travel Solutions:

Customized solutions for corporate clients, including executive travel and group charters.



Specialized Charters:

Catering to unique requests such as medical evacuations, cargo transport, and bespoke tours.



Helicopter Services:

Experience swift, personalized air travel with our helicopter services. Ideal for business or leisure, offering convenience and luxury to efficiently reach your destination.



Aircraft Management:

We ensure the operators fully and safely maintain the jets going through records.



Concierge services:

Our Concierge services offer personalized luxury car rentals and hotel reservations, ensuring seamless travel with top-tier vehicles, exclusive accommodations, and tailored support for a premium journey.



AUGOE/AVIATION

OUR FLEET



AUGOE & SONS
COMPANY NIC. LIMITED

... Bridging the gap for Excellence



BEECHCRAFT HAWKER 800XP

BEECHCRAFT HAWKER 800XP



PERFORMANCE

Normal Range 4704 km / 2470 nm



PERFORMANCE

Capacity 8
Crew 2 + 1

CABIN SPECIFICATIONS

Length 6.50 m / 51 ft 2"
Width 1.83 m / 6 ft
Height 1.75 m / 5 ft 9"
Lavatory Full Lavatory





BEECHCRAFT HAWKER 900XP

BEECHCRAFT HAWKER 900XP



PERFORMANCE

Normal Range 5426 km / 2930 nm



PERFORMANCE

Capacity 8
Crew 2 + 1

CABIN SPECIFICATIONS

Length 15.6m / 51 ft 2"
Width 1.83 m / 6 ft
Height 1.75 m / 5 ft 9"
Lavatory Full Lavatory





BOMBARDIER CHALLENGER 604

BOMBARDIER CHALLENGER 604



PERFORMANCE
Normal Range 7556 km / 4077 nm



PERFORMANCE
Capacity 10
Crew 2 + 1

CABIN SPECIFICATIONS
Length 8.66 m / 68 ft 5"
Width 2.49 m / 8 ft 2"
Height 6.3 m / 20 ft 8"
Lavatory Full Lavatory





BOMBADIER ERJ 145

BOMBADIER ERJ 145



PERFORMANCE

Normal Range 2963 km / 1600 nm

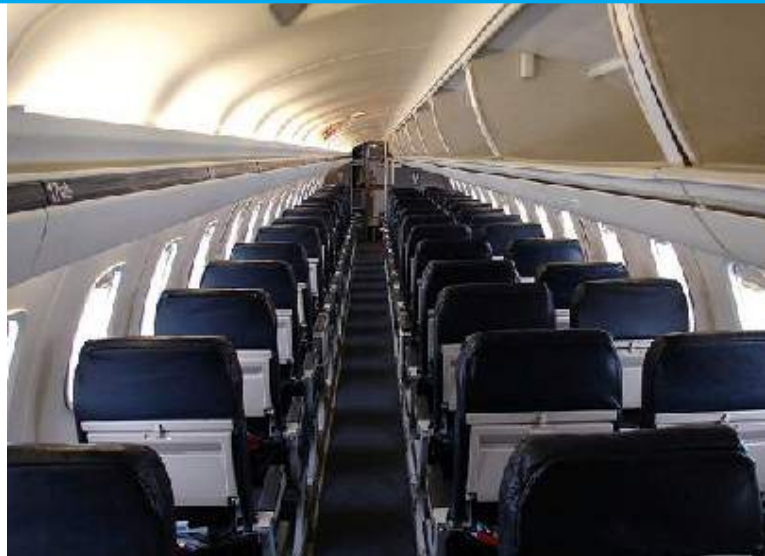


PERFORMANCE

Capacity 50
Crew 2 + 1

CABIN SPECIFICATIONS

Length 29.87 m / 98 ft
Width 2.11 m / 6 ft 11"
Height 1.83 m / 6 ftv
Lavatory Full Lavatory





BOMBARDIER CHALLENGER 605

BOMBARDIER CHALLENGER 605



PERFORMANCE

Normal Range 7408 km / 4000 nm



PERFORMANCE

Capacity 12
Crew 2 + 1

CABIN SPECIFICATIONS

Length 8.66 m / 28 ft 4"
Width 2.49 m / 8 ft 2"
Height 1.85 m / 6 ft 1"
Lavatory Full Lavatory





BOMBARDIER CRJ 200

BOMBARDIER CRJ 200



PERFORMANCE

Normal Range 3148 km / 1700 nm



PERFORMANCE

Capacity 25
Crew 2 + 1

CABIN SPECIFICATIONS

Length 26.77 m / 87 ft 10"
Width 2.53 m / 8 ft 3"
Height 1.85 m / 20 ft 8"
Lavatory Full Lavatory





GULFSTREAM G200

GULFSTREAM G200



PERFORMANCE

Normal Range 6300 km / 3400 nm



PERFORMANCE

Capacity 8 - 10
Crew 2 + 1

CABIN SPECIFICATIONS

Length 7.44 m / 24 ft 5"
Width 2.18 m / 7 ft 2"
Height 1.91 m / 6 ft 3"
Lavatory Full Lavatory





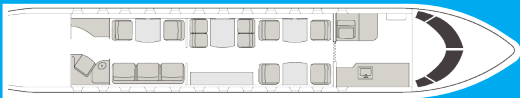
EMBRAER LEGACY 650

EMBRAER LEGAC 650



PERFORMANCE

Normal Range 7037 km / 3800 nm



PERFORMANCE

Capacity 13
Crew 2 + 1

CABIN SPECIFICATIONS

Length 12.95 m / 42 ft 64"
Width 2.05 m / 6 ft 9"
Height 1.75 m / 5 ft 9"
Lavatory Full Lavatory





EMBRAER LEGACY 600

EMBRAER LEGAC 600



PERFORMANCE

Normal Range 4574 km / 2470 nm



PERFORMANCE

Capacity 13
Crew 2 + 1

CABIN SPECIFICATIONS

Length 6.50 m / 21 ft 4"
Width 1.83 m / 6 ft
Height 1.75 m / 5 ft 9"
Lavatory Full Lavatory





PERFORMANCE

Normal Range 740 km / 400 nm



PERFORMANCE

Capacity 4

Crew 2

SPECIFICATIONS

Length 16 m / 52.5 ft

Rotor Diameter 13.41 m / 44 ft

Height 4.42 m / 14.51 ft





AIR

AIR



PERFORMANCE

Normal Range 740 km / 400 nm

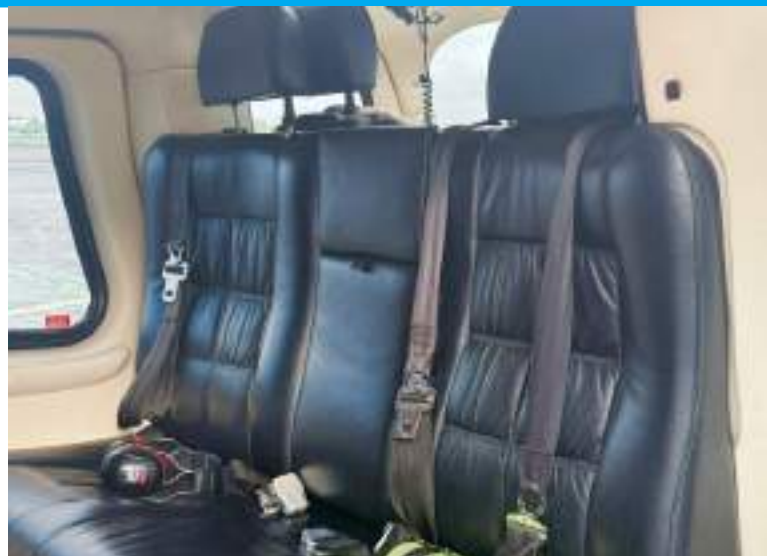


PERFORMANCE

Capacity 5
Crew 2

SPECIFICATIONS

Length 16 m / 52.5 ft
Rotor Diameter 13.41 m / 44 ft
Height 4.42 m / 14.5 ft



SAFETY & MAINTENANCE



The World is Closer to You

The world is closer to you, and so is peace of mind. We put safety at the heart of everything we do - we have access to over 1000 jets globally, where we collaborate with private jet operators, with regular inspections and rigorous maintenance protocols. Our expert pilots undergo extensive training to ensure you have a safe, smooth and memorable experience.



ZENCO



Neveah Li

Cubana
GROUP

CG
CENTURY GROUP



Gluwa

aella

CLIENTELE

As you glance through these icons of industries, know that they are more than our clientele; they are our allies in ambition, our co-creators of success. With shared passion and collective expertise, we're breaking down boundaries and bringing the world to your doorstep.



*Let's Bring
The World closer to You...
Thank You!*



📍 No. 2 Oghene Close GRA Phase 2
Port Harcourt, Rivers State. Nigeria.

✉️ Info@augoe.com

☎️ +234 803 708 7264